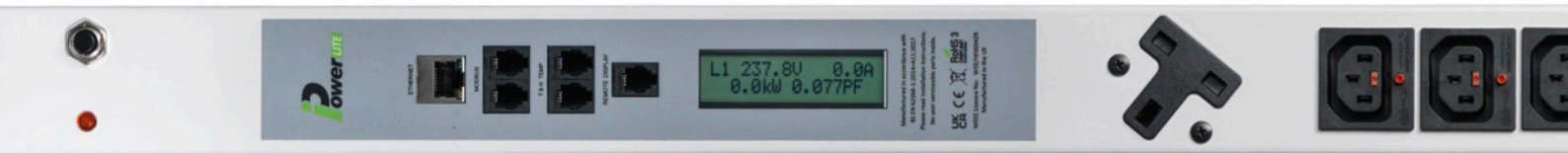


iPower® Lite is a 1st Generation energy monitor providing local and remote overall / Strip level energy monitoring with better than 1% accuracy. Manufactured as a single phase unit capable of loads up to to 32Amps and can be built as an Inline unit or as a multi socket Power Strip incorporating any type of Socket and Mains Lead termination. iPower® Lite also has environmental ports for the connection of Temperature and Humidity Sensors, plus units can be daisy chained so up to 32 devices can be monitored through a single IP Address. All units have a fitted display and can be remotely monitored through the network port via the internal web browser or over SNMP and Telnet.

Overall Energy Measurements with an accuracy of better than 1% include:

- RMS Volts
- RMS Amps
- Kilowatts
- Frequency
- Internal PDU Temperature
- Power Factor
- Peak Volts
- Peak Amps
- kVA
- kWh



iPower® Lite Is part of the iPower® family, and can be monitored via the HTML Interface, or our Free of Charge PDU Agent Software, or integrated into third party software using our MiB File.

iPower® Lite Provides a thorough analysis of real time power usage across all connected devices.

iPower® Lite has an easy-to-use HTML interface with the ability to set SNMP and Email alerts for all critical parameters. iPower® Lite can be Daisy Chained up to 32 PDUs from a single IP Address

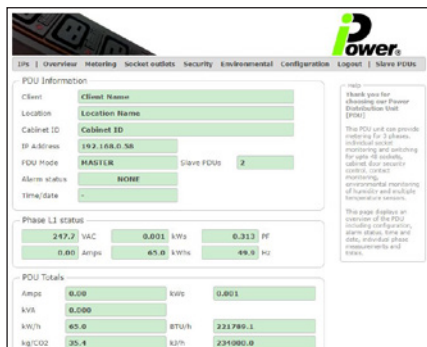
iPower® Lite Is configurable to suit individual requirements. It can be a PDU or an inline device, that will provide remote monitoring for legacy systems.

iPower® Lite Will work in conjunction with other iPower® products, to create a fully flexible monitoring system allowing products with different functionality to work together.

iPower® Lite supports a range of external features that further enhance its capabilities, making it a powerful entry level device for overall power and environmental monitoring.

**Features**

- Single Phase only
- Overall Energy Measurement up to 32A
- Accuracy of better than 1%
- Set Alerts for all critical metrics
- Send Alerts via Email or SNMP Traps
- Easily configured and setup in minutes
- Simple migration to full DCiM using MiB File.
- Ethernet Port, Full 10/100Base-T Network Compatibility (HTTP, HTML, SNMPv2, Telnet, SMTP)
- Local Display (RGB LCD Display with Backlight)
- Environmental Ports for Temp and Humidity Sensors
- Modbus Ports for Daisy Chaining up to 32 PDUs from a single IP Address
- Remote Display Port to connect an additional display for hard to access PDUs



**PDU Agent™ Management Software**

**Consolidate all your readings with PDU Agent.**

Entry level management platform with easy to use dashboard layout lets you log measurements and events from multiple iPower® products for historical evaluation and to collate and produce accurate usage reports.

**On screen guide makes installation simple**

Each of the inbuilt HTML pages contain instructions to guide you through the setup process and explains how to set traps and alerts for critical parameters.

To EN62368-1:2020 Intertek – 10553241

